

# DIFFUSERS & GRILLS



The diffusers are constructed with a heavy duty aluminium sheet and extruded profile, and powder coated for the corrosion resistance and for good aesthetical appearance. The diffusers are designed for ceiling mounting applications with effective air distribution arrangement.

# SQUARE CEILING DIFFUSER

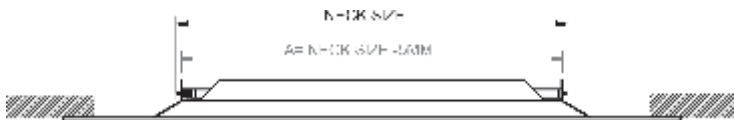
## Multi Cone Diffuser

The Square diffusers are constructed with heavy-duty margin and a one-piece removable center core, which features multiple deflecting louvers. The core snaps in place without the use of tools. A unique horizontal lip on the deflecting louver ensures a tight ceiling air pattern for excellent mixing.

### Features

- Removable core assembly unit for easy installation, accessible to diffuser damper.
- Available with various outer frame constructions.
- Available with various customised colours.

### Dimensional Data



**TYPES :** TEGULAR | PLAIN

#### NECK SIZES

150 x 150 mm | 225 x 225 mm | 300 x 300 mm |  
375 x 375 mm | 450 x 450 mm



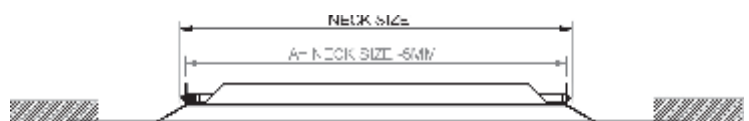
## Plaque Diffusers

The diffusers consist of a stamped back pan with a removable plaque face. The plaque is held in place with four brackets that positively engage into the back pan. The architectural plaque diffusers feature a 4-way horizontal ceiling pattern effective for cooling applications where a clean ceiling appearance is required.

### Features

- Plaque face is removable without the use of tools
- Double thickness center plate void of any visual spot welds or rivets
- Full-face diffuser
- Available with various customised colours

### Dimensional Data



#### NECK SIZES

225 x 225 mm | 300 x 300 mm  
375 x 375 mm | 450 x 450 mm

## Swirl Diffuser

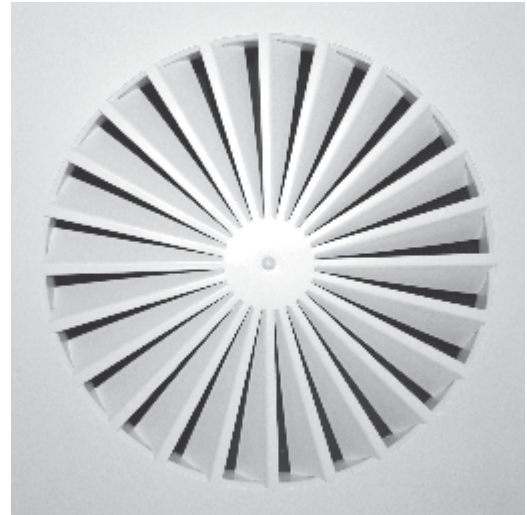
The swirl face diffuser is designed to provide a tight 360° radial air pattern for ceiling applications.

It can be employed in variable air volume systems with high turn-down ratios while delivering excellent performance that eliminates drafts and stratification.

The swirl face diffuser is also incorporates a removable button plug in the face to allow operation of the damper without removing the face

### Features

- Swirl face provides a full 360° air pattern that is parallel with the ceiling
- Variety of neck sizes to meet design requirements
- Available with various customised colours



### Dimensional Data

#### DIAMETERS

Dia 300 mm, outer size 595 mm x 595 mm.  
 Dia 400 mm, outer size 595 mm x 595 mm.  
 Dia 550 mm, outer size 595 mm x 595 mm.

## Linear Slot Diffusers



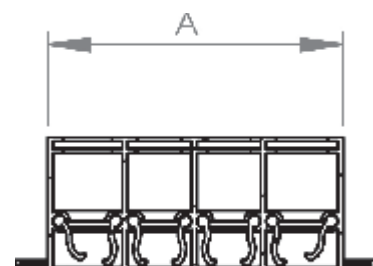
The Slot Diffusers are designed for installation in the ceiling or sidewall and are recommended for supply of heated or cooled air and for returning or exhausting of room air. The air pattern is field adjustable for either horizontal or vertical discharge. Multiple slot units can be set to discharge air in a 2-way, horizontal pattern.

The slot diffusers features frames and vanes constructed of high-quality aluminium. The standard finish is painted white frames with black painted vanes. Optional paint finishes are available.

### Features

- One to six slots available
- Customized painted Frame colours
- Vanes are painted black
- Field adjustable for horizontal or vertical discharge

### Dimensional Data



No. of slots	1	2	3	4	5	6
A neck dimension	42	79	117	155	193	231

# ROUND DIFFUSER

## Round Ceiling Diffuser

The round ceiling diffusers are designed for use of in large open spaces where high volumes of air is required. Round ceiling diffusers provides an excellent horizontal ceiling pattern for cooling applications the ceiling diffusers have multi cones, giving uniform appearance regardless of design specifications. The inner core assembly is removable for easy access during installation

### Features

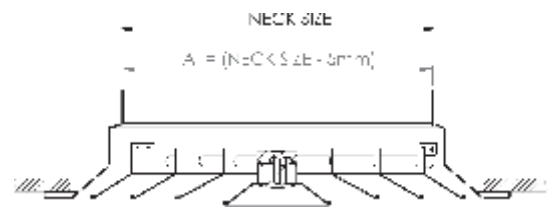
- Center core assembly is adjustable for different air patterns and removable for easy duct access
- Spring lock mechanism allows easy removal and replacement of inner core assembly
- Available with various customised colours

#### NECK SIZES

Dia150 mm | Dia 200 mm | Dia 250 mm |  
Dia 300 mm | Dia 350 mm | Dia 400 mm |  
Dia 450 mm



### Dimensional Data



#### NECK SIZES

Dia 250 mm | Dia 315 mm | Dia 380 mm |

## Jet Diffusers

The jet ceiling diffusers have been designed to handle high air flow rates and provide relatively long throws which makes them particularly suitable for conditioning of large spaces. The core may be rotated through 180° to expose either a straight or diffused core assembly.

### Features

- Simple and effective air diffusion for large spaces
- Long throw characteristics
- High air handling capacity
- Easy to install and adjust
- Available with various customised colours

## Jet Nozzle Diffuser

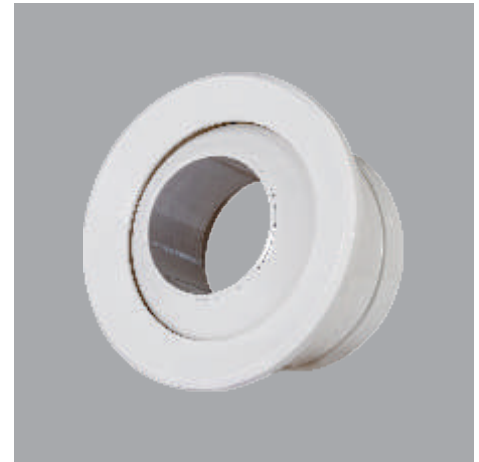
Jet Nozzle diffusers are highly suitable for delivering a powerful stream of air over long distances. Its ability to deliver an accurate airstream makes it ideal for spot cooling applications. This diffuser spout is fully reversible, rotating through 180deg. The diffuser can be fixed directly to the round duct. The diffuser is suitable for long throw patterns with trajectory control. Gasket is sealed around the back of the spout to avoid air leakage

### Features

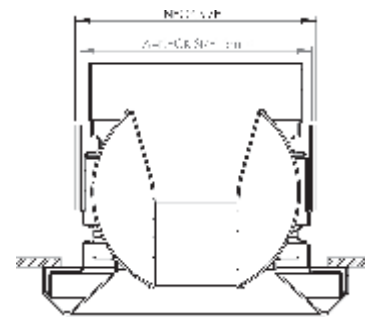
- Fully reversible spout, rotating through 180deg.
- Can be fixed directly to the round duct.
- Suitable for long throw patterns with trajectory control.

#### NECK SIZES

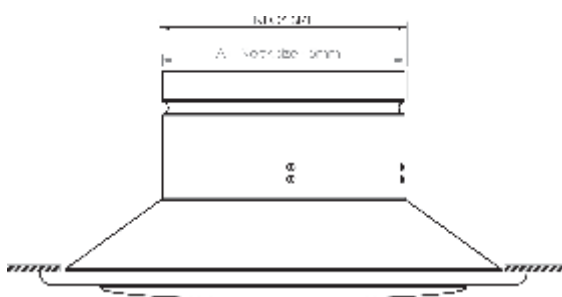
Dia100mm | Dia125mm | Dia160mm | Dia200mm  
Dia250mm | Dia315mm | Dia400mm



### Dimensional Data



### Dimensional Data



## Disc Valve

Disc valves are used as an alternative to ceiling diffuser disc valve made of high quality GSS /Al with customized colors. The disc valves consist of a valve ring, central disc and installation sub frame. Disc valves are Ideal for handling exhaust of greasy and damp areas like kitchen, restroom etc.

The air volume flow rate is adjusted by rotating the central disc which alters the size of the gap

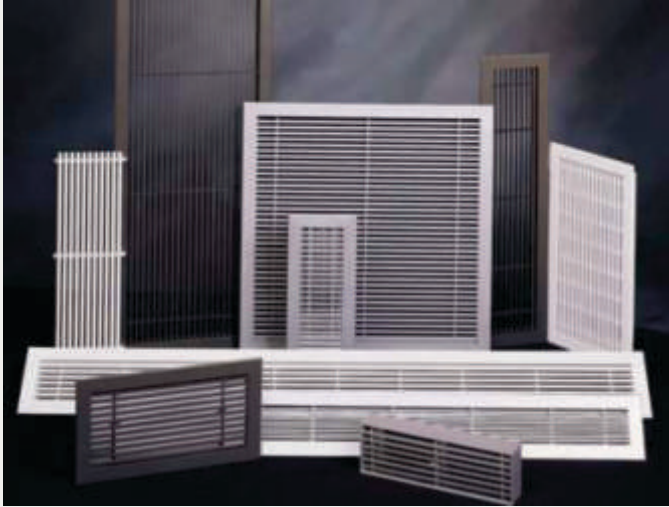
### Features

- Easy air flow adjustment by turning the central part.
- Special design ensures low noise level.
- Installation flanges make it easier to connect the valve to the installation.
- Quick and easy installation.

#### NECK SIZES

Dia100 mm | Dia150 mm | Dia 200 mm

# GRILLS



Grilles and Registers are widely used for supply and return air distribution of HVAC system and are suitable for ceiling, floor, sill and sidewall applications.

Grilles can be manufactured for continuous applications, modular units in single section of up to 2m. Linear curved grilles can be manufactured in a curve in a variety of radii to suit the requirements.

The grilles are manufactured with high quality extruded aluminium profile, bars & precision stamped corners for better quality. Grilles are available in one way airflow pattern for 0, 15, 30 and 45 degree bar deflection and in one or two way air flow pattern for 0, 15, 30 and 45 degree bar deflection, 15&30 degree bar deflection are available for two way air flow pattern. The bars are equally spaced at 12mm distance.

## Features

- Spacers are provided for perfect liner bar spacing.
- Deflection bars are fixed and are parallel to the long direction.
- Available with various customized colours